

The Basset Hound



Thank you to:

Mariano Galán Zancajo from kennel Morning Dew Sweepers in Spain and **Ricardo Simoes**, FCI International All Rounder judge from Confederação Brasileira de Cinofilia (CBKC)

And

Iva Černohubová from kennel Bohemia Horrido in Czech Republic

And

Jane Baetz from kennel Olde Fashion in USA

And

Rudy Smits from kennel van Grunsven in Holland
for comments and allowing me to use the images, pictures and sketches!

Compiled and presented by:

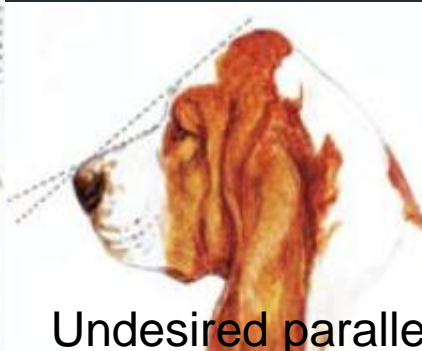
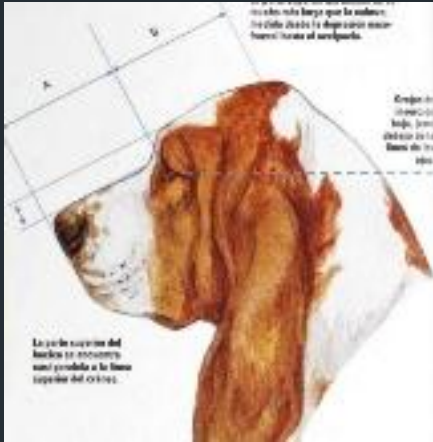
Annemari Groenewald, Bassefied Basset Hounds

- Head
- Neck
- Front
- Ribs
- Rear
- Top / Back line
- Length
- Overall picture
- Movement
- Other
- Acknowledgements

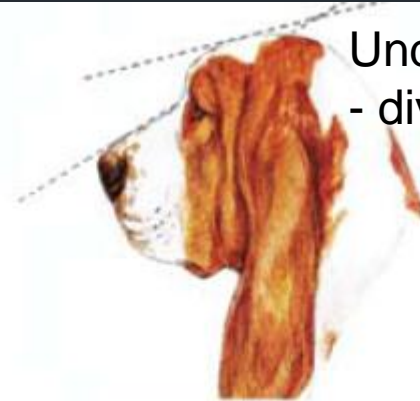


Basset Hound head

Desired parallelism



Undesired parallelism - convergent



Undesired parallelism - divergent



Correct length muzzle

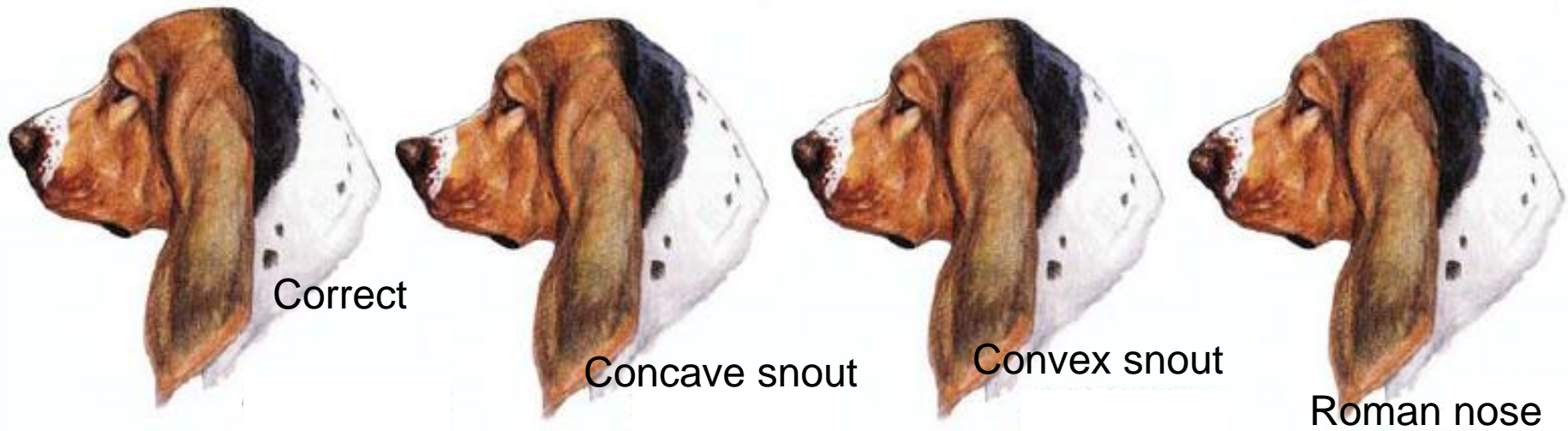


Short snout



Muzzle too long

Basset Hound head



Note:
Roman nose should not be mistaken with unparallel planes, it gives expression of nobility.

Basset Hound head



Stop correct

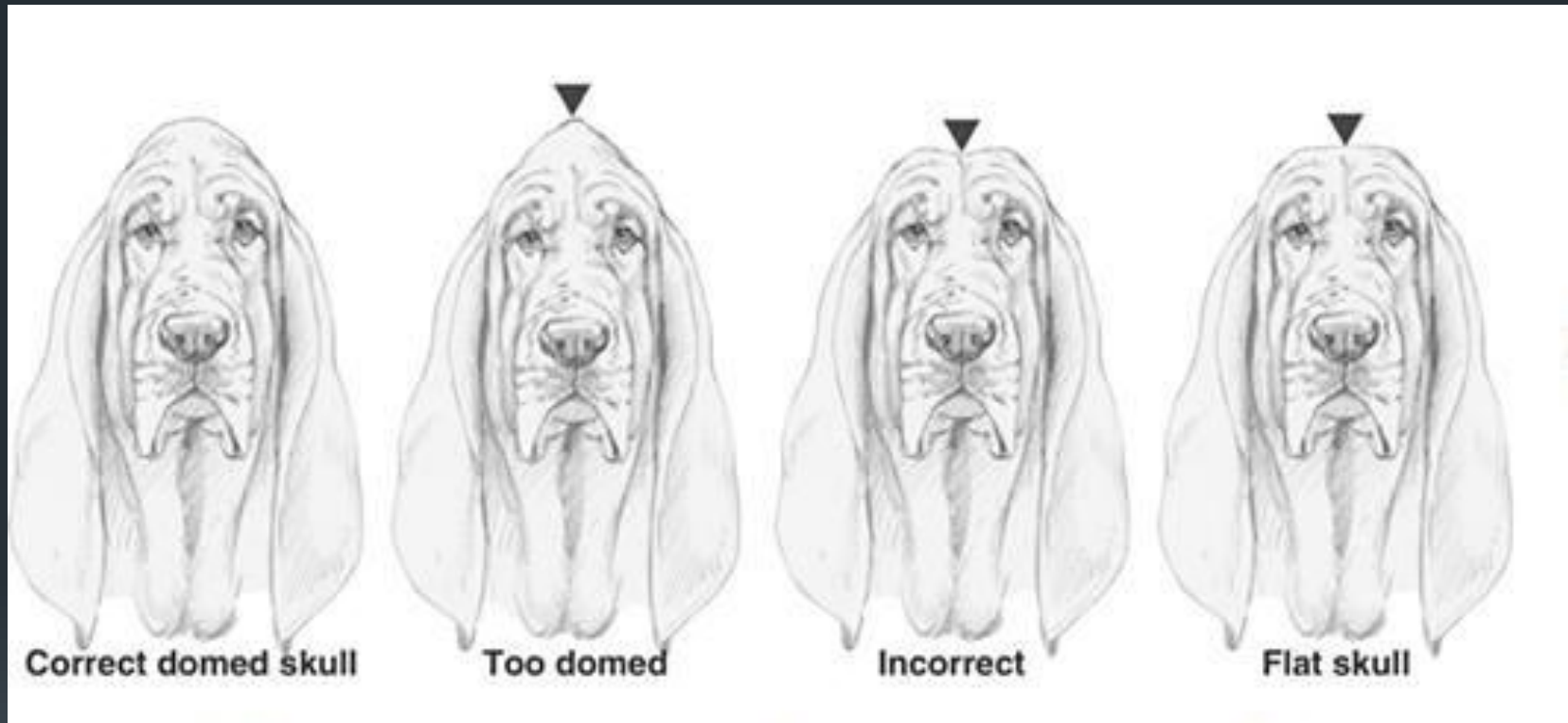


Stop insufficient



Stop too much

Basset Hound head



Notes:

If the skull is not too narrow and the planes are parallel a well defined occiput should not be confused with “too domed” head.

Basset Hound head

Correct eyes



Too open eyes due to too much loose skin on face

Note:

Eyes should be dark.

Lighter coloured eyes are permitted in lemon/lighter coloured dogs, but darker eyes give a softer and more desirable expression.

Basset Hound head



Desired ear set



High ear set



Low ear set

Note:
High ear set could give strange expression.

Basset Hound head



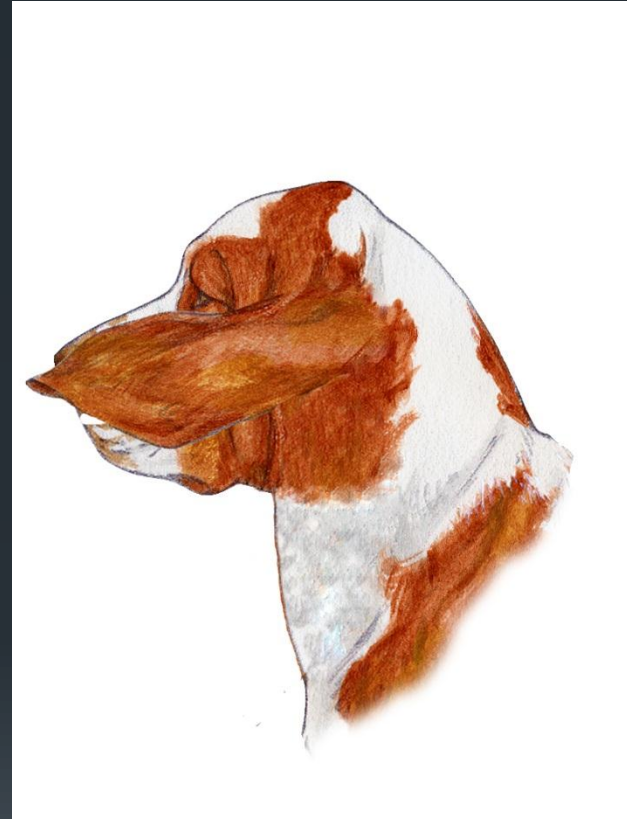
Flat ear



Correct ear

Note:
Ears should not be wide and should be thin.

Basset Hound head



Correct length of ears

Notes:
Ears should extend beyond muzzle.

Basset Hound head



Examples of typical basset hound heads

Note:

Notice the appearance of skin fold besides eyes on cheeks of all three Bassets. If this skin fold would be missed, the head should seem dry.

Ears are “curling in”.

Rudy Smits: “Haw middle and right – Middle has pigmented third eyelid so right haw seems more. Lack of pigment does not mean haw is worse.”

Basset Hound head



Correct lip



Too little lip

Note:

Rudy Smits: "Lip should be deep in front also at height of nose. In bitches it is 'lost' faster than in males, they more easily show lip."

Basset Hound neck



Correct smooth curvature of neck

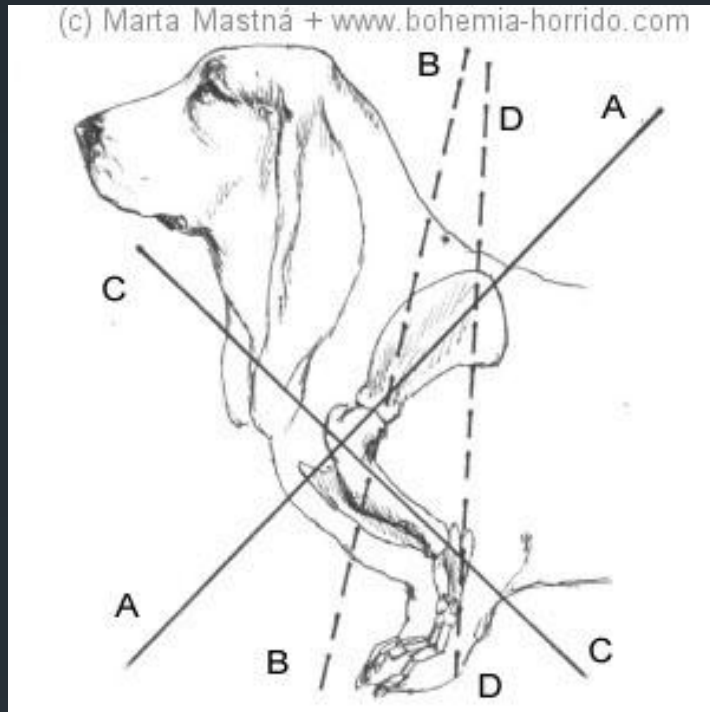


Desired neck



Short neck

Basset Hound front



Rudy Smits: “Shoulder is judged best by seeing how neck goes into back. They learn judges here that when nice long neck goes into back fluently the shoulder placement can only be excellent!”

Notes:

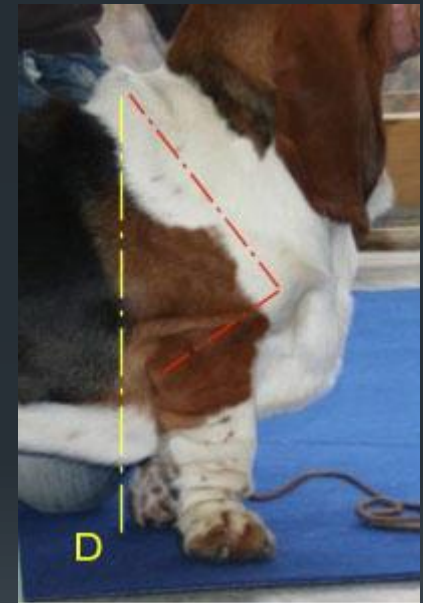
A - Correct: Shoulder blade makes 45° angle to ground. The line shows good reach of forelegs.

B - Incorrect: Steep shoulder blade placement. The line shows how the reach of foreleg is limited.

C - Upper arm makes 90° angle to shoulder blade. Upper arm of good length, reach well back and down.

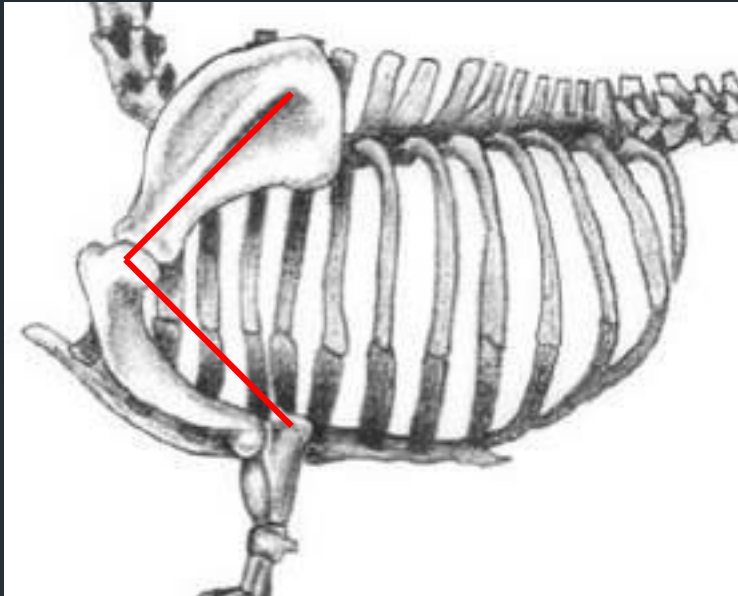
D - Ideal position for showing and judging front angulation: if the upper arm is too short, it doesn't permit front leg to stand under withers and to cover deepest part of chest.

Basset Hound front



Notes:
Short upper arm (humerus) and not laid back shoulders.

Basset Hound front



Correct



Nice shoulder blade length
but upper arm to short.

Notes:

Jane Baetz: "Sometimes we are proud to say that the upper arm on our dogs matches the shoulder blade. But if they are both too short you get a very forward look to the front assembly. This is true on almost every breed. The look tends to be bulky and lumpy when this is a problem and the gait is way too short. Feet just moving underneath the dog. You also tend to loose an adequate sternum."

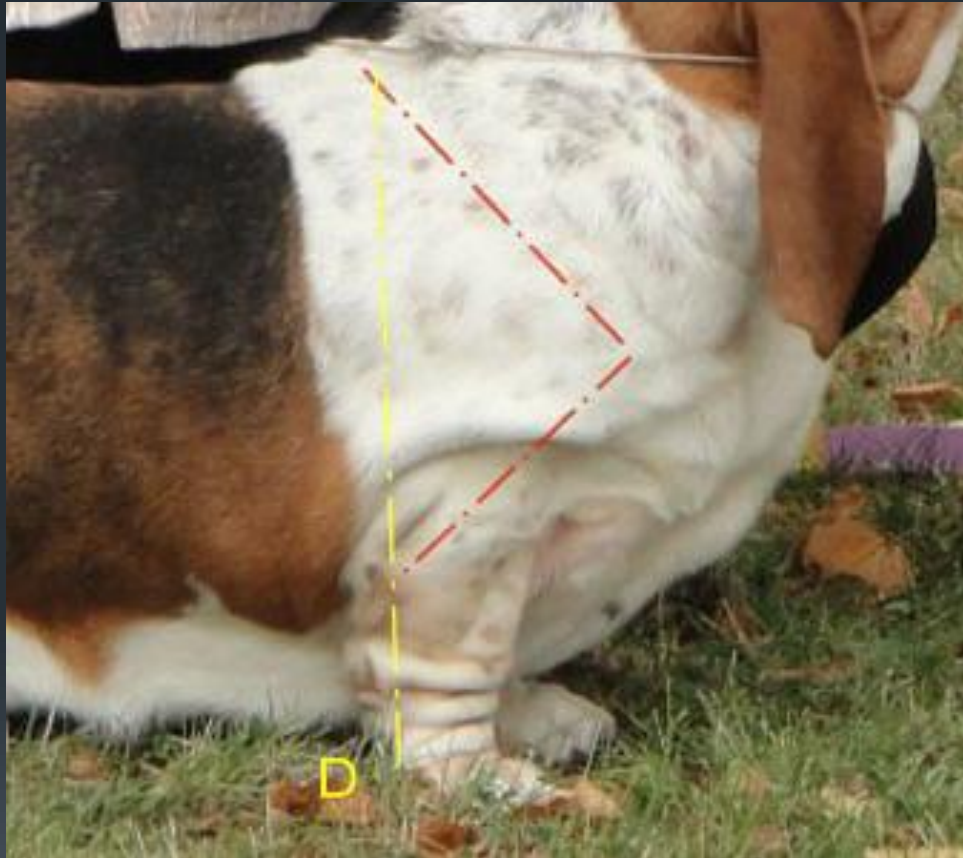
Basset Hound front



Notes:

Jane Baetz: "Front shoulders: at a glance, bad. Short upper arm short shoulder blade in comparison to size of dog, lumpy look falling off the bottom of the dogs body instead of in and nice and smooth."

Basset Hound front



Notes:

Correct example of front angulation with shoulder blade placed well back.

Basset Hound front



Notes:

Jane Baetz: “Shoulders at a glance, good. Nice layback with good shoulder blade length and nice length of upper arm. Smooth not bumpy flowing into body.”



MORNING DEW SWEEPERS

BASSET HOUND KENNEL

www.bassethound.es

Basset Hound front legs

Note:

Mismatched front in the example is not severe.
Feet are allowed to be slightly turned out.



Correct



Mismatched front



Toed in



Wide front

Basset Hound front



Correct front and feet

Basset Hound front



Incorrect narrow front with too turned-out feet

Note:

Rudy Smits: “Really mismatched front, uneven and too much crook.”

Basset Hound front



NL CH Blondy van Grunsven

Well pronounced forechest



MORNING DEW SWEEPERS

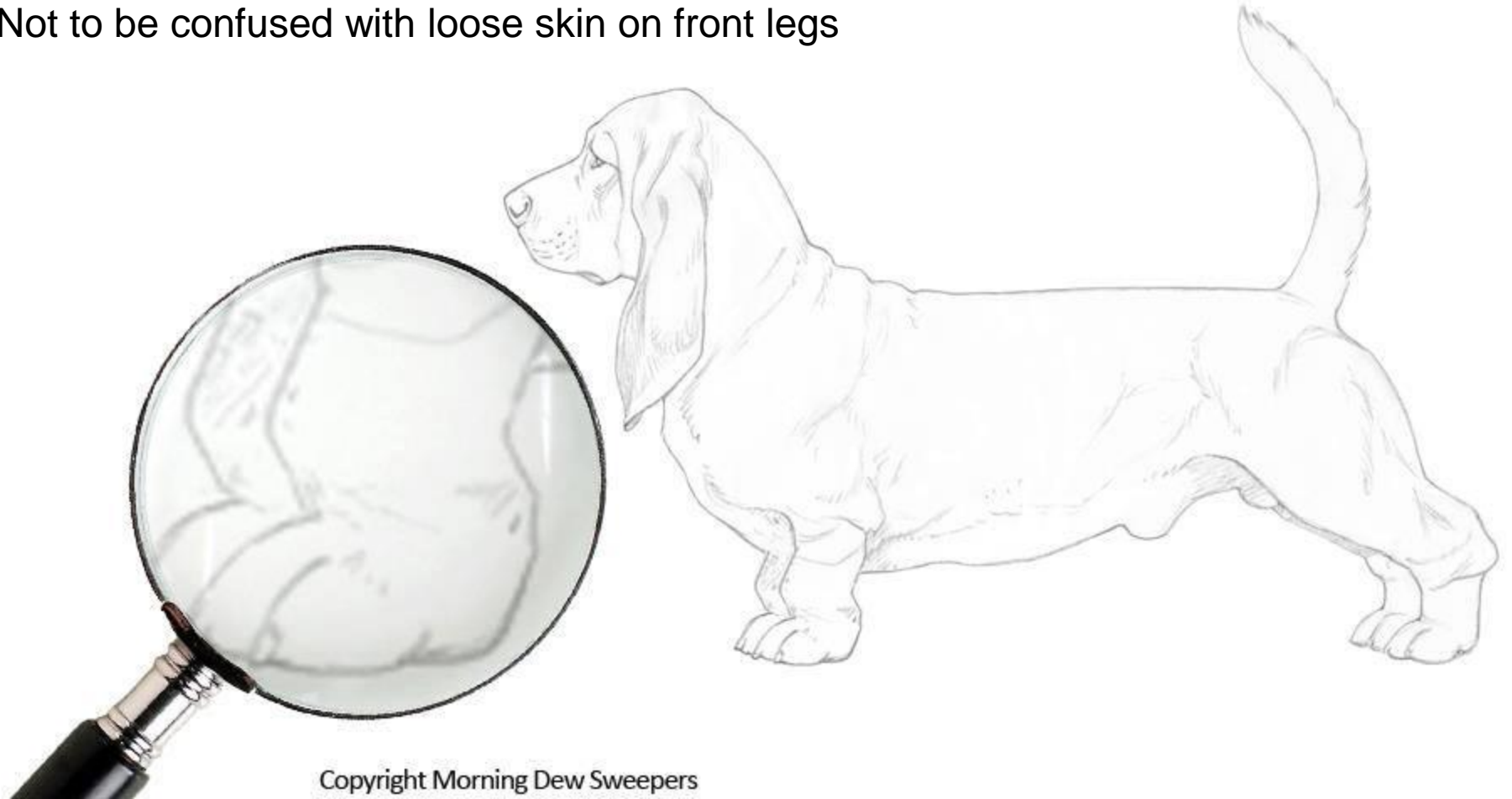
BASSET HOUND KENNEL

www.bassethound.es

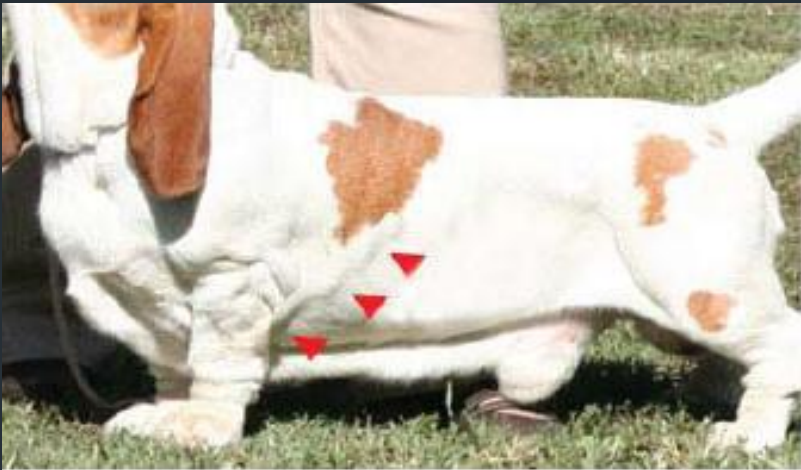
Basset Hound front legs defect: knuckled-over

Notes:

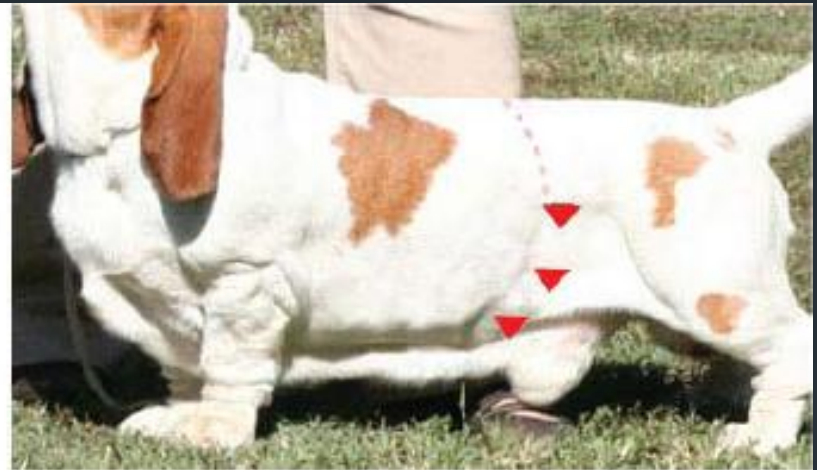
Not to be confused with loose skin on front legs



Basset Hound ribs

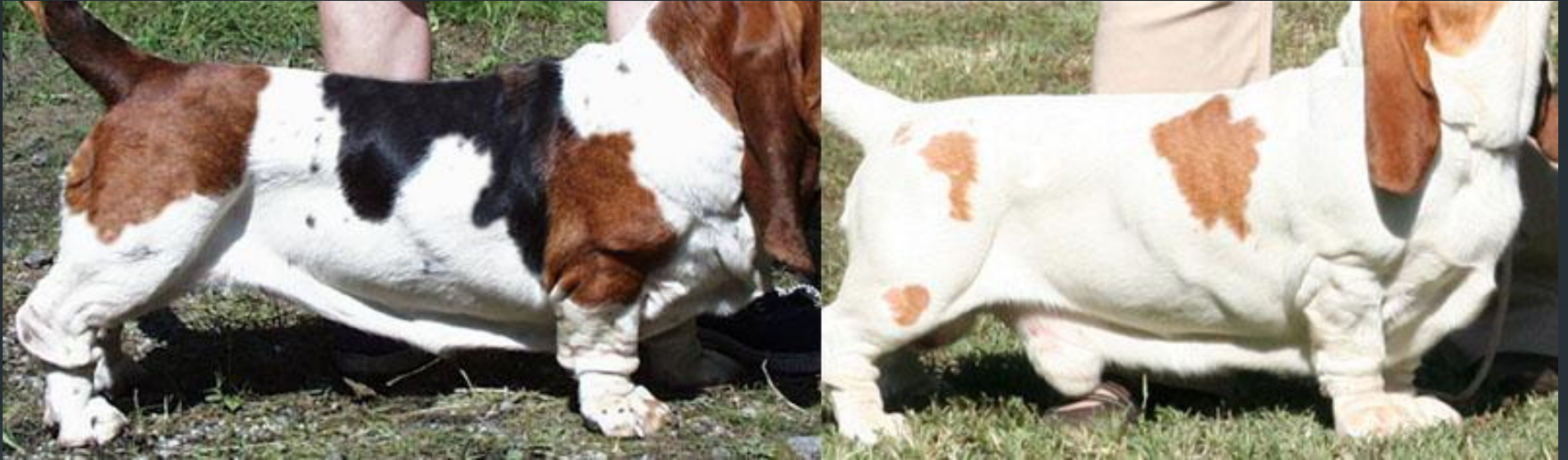


Arrows indicate position of short ribs with little depth



Arrows indicate position of good thorax and ribs

Basset Hound ribs



Short rib cages

Basset Hound ribs



Notes:

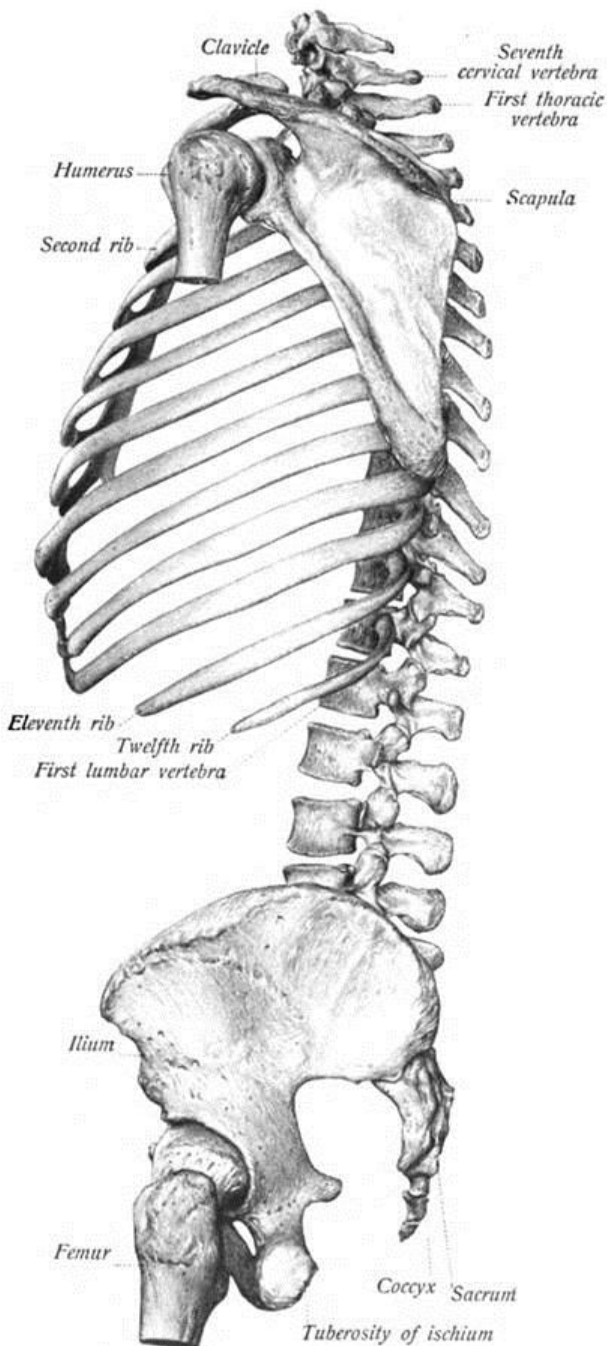
Ribs should not be flat or flanging.

Ribs should be well sprung and well rounded to the touch.

Basset Hound ribs



Notes:
Flat and flanging ribs.

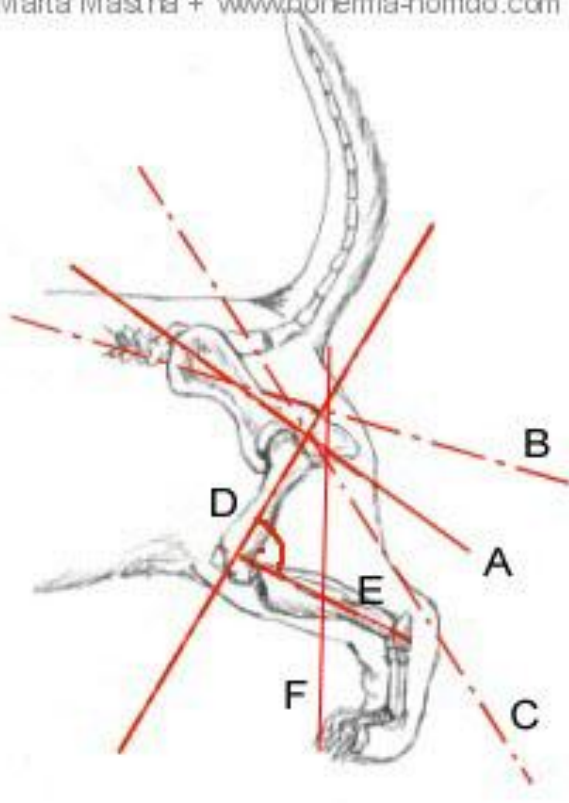


Basset Hound ribs

Jane Baetz: “The rib cage is composed of 12 pairs of ribs plus the sternum for a total of 25 separate bones. The rib cage functions as protection for the vital organs such as the heart and lungs. The ribs are shaped like crescents. The upper seven pairs of ribs attach to the sternum with costal cartilage and are known as “true ribs.” The 8th through 10th ribs have non-costal cartilage which connects them to the ribs above. The last two ribs are called “free ribs” because they do not attach to the sternum or to other ribs and simply “hang free.” The length of each rib increases from number one to seven and then decreases until rib pair number 12. The first rib is the shortest, broadest, flattest, and most curved.”

“It is very important that the sternum bone connects all the way to the 7th rib for structural strength. When feeling at the bottom of the ribs you should feel a very sharp V where the ribs come together. If not the ribs are not joining correctly or the sternum is too short.”

(c) Marta Mastrá + www.bohemia-horrido.com



Basset Hound rear

Notes:

A - Correct: Pelvic cage angling 30° to ground.

B - Incorrect: Flat pelvis that results mostly in steep/straight stifle. If the bones are short, it results in short steps (stilted gait).

C - Incorrect: Steep pelvis, that results in low set tail and lack of follow-through in movement.

D - Upper thigh makes 45° angle to ground and is up-right to lower thigh and pelvis too.

E - Lower thigh of good length. If it is shorter, it results in steep rear or short steps.

F - Ideal position for showing and judging rear angulation.

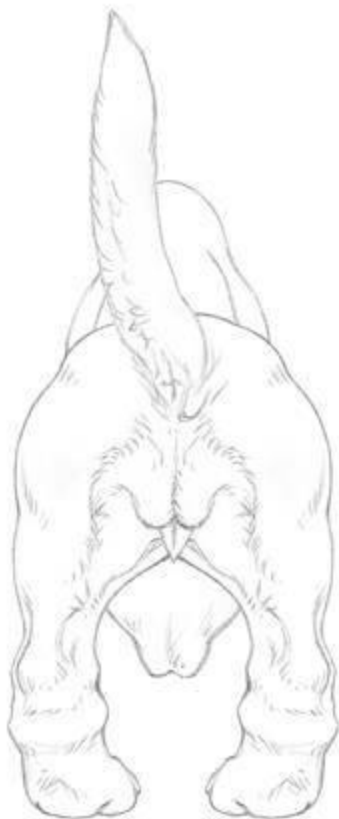


MORNING DEW SWEEPERS

BASSET HOUND KENNEL

www.bassethound.es

Basset Hound hindquarters



Bowed



Cowhocked



Correct

Basset Hound rear

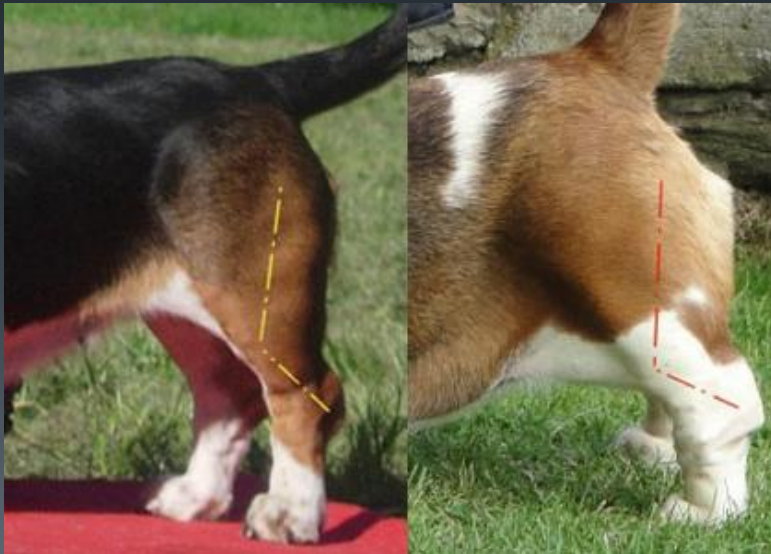
High hocks and steep stifle



Steep pelvis and rear angulation



Too short lower thigh



Basset Hound rear



Good rears with good angulation

Basset Hound rear



Correct tail placement



Low set tail placement

Note:

On the move tail carried well up, sabre fashion.

Basset Hound top line

Saggy top lines



Roached top line



MORNING DEW SWEEPERS

BASSET HOUND KENNEL

www.bassethound.es

Basset Hound backline



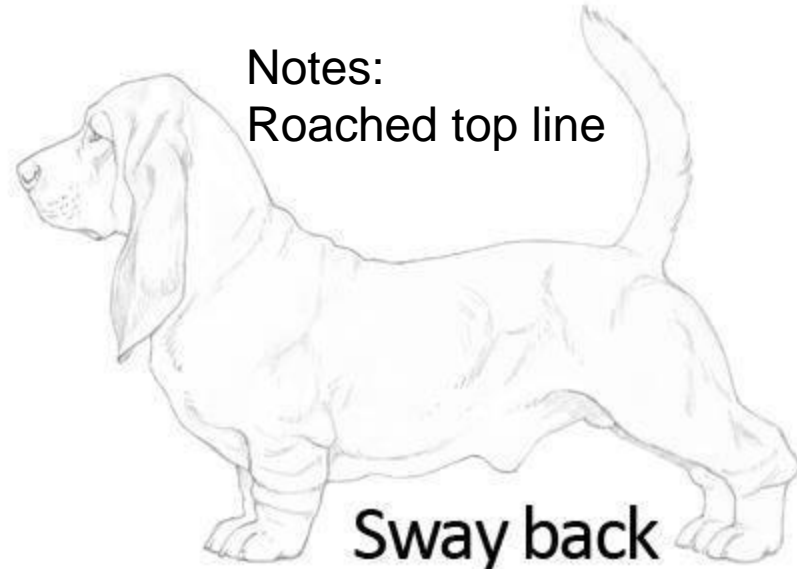
Correct

Straight rear



Notes:
Lacking rear angles

Notes:
Roached top line



Sway back



MORNING DEW SWEEPERS

BASSET HOUND KENNEL

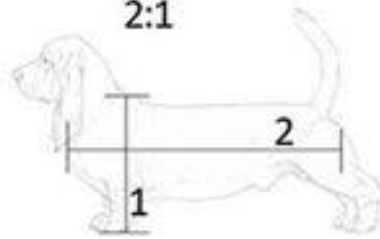
www.bassethound.es

What is the correct length:height proportion in Basset Hound?

1.75:1



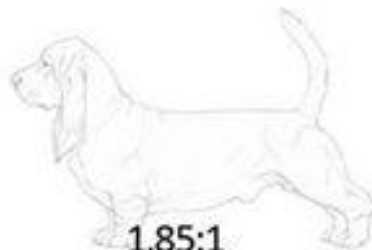
2:1



1.6:1

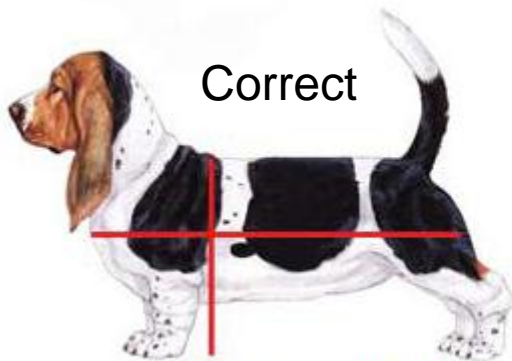


1.85:1



Copyright Morning Dew Sweepers

Basset Hound length



Correct

Proporções corretas $2 > 1$



Too short

Exemplar muito curto - incorreto



Too long

Exemplar muito longo, incorreto

Basset Hound bone



Not enough bone and substance

Basset Hound bone



NL CH Royal Rocky van Grunsven

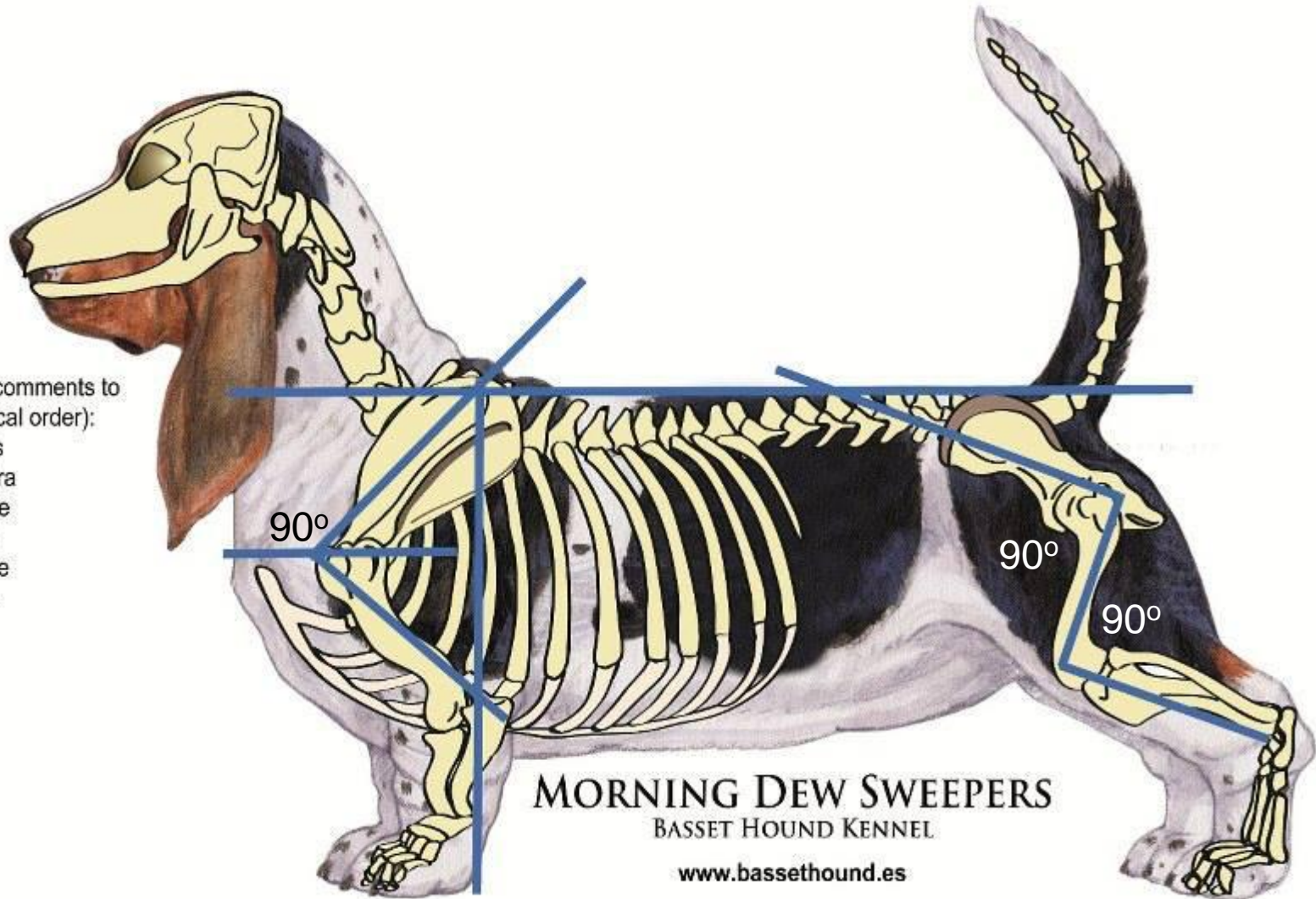
Notes:

From the breed standard: “considerable substance”, “great bone”, “feet massive”



Special thanks for their comments to
(ordered by alphabetical order):

Attila Kovács
Bianca Teixeira
Gramma Jane
Karl Flores
Luna Caprese
Olea Bull's



Notes:

- Upper arm length = Shoulder blade length.
- Front feet in line with withers (laid back shoulders).
- Good length lower thigh (deep bend in stifle).
- Flat top line.
- 90° angles.

Basset Hound overall picture



Note:

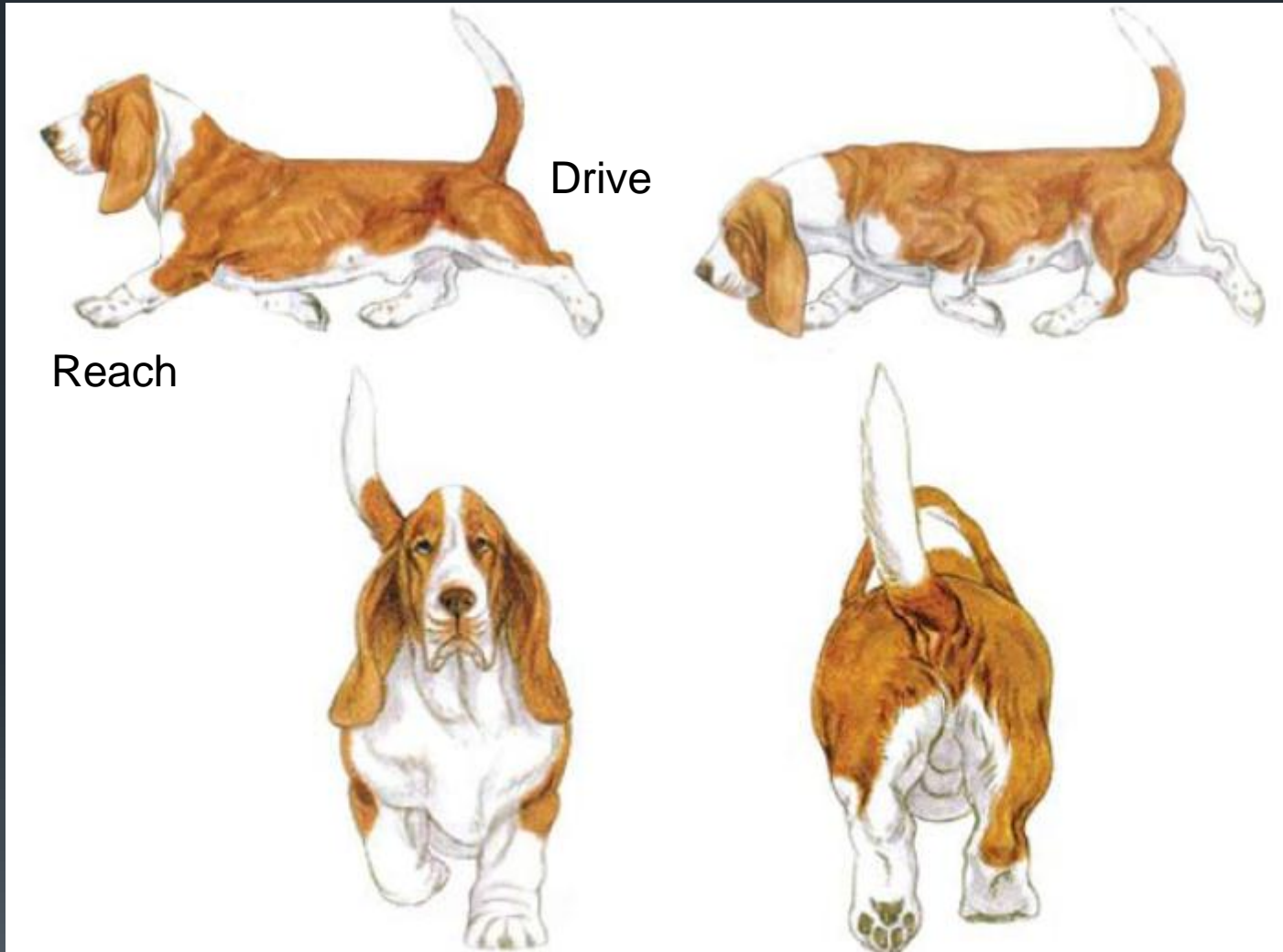
NL/D/LUX/DK/UK/USA and Int (show) Ch, CW (NL)'10, W (A'dam)'10/'12, WW'11/'13, EW'11, Best Bitch Crufts '12, Bdssgr '12 CH Darwin's Dream van Grunsvan

Basset Hound overall picture



NL Ch, W (A'dam) '09/'10 Electrifying Elvis van Grunsven

Basset Hound movement



Notes:

Correct movement \neq fast movement.

Correct movement = effortless movement.

Basset Hound movement



Reach



Drive

Rudy Smits: “Often effortless movement is lacking in the front and not enough drive and length of stride is seen behind also, but rather this than unbalanced movement.”

Basset Hound movement

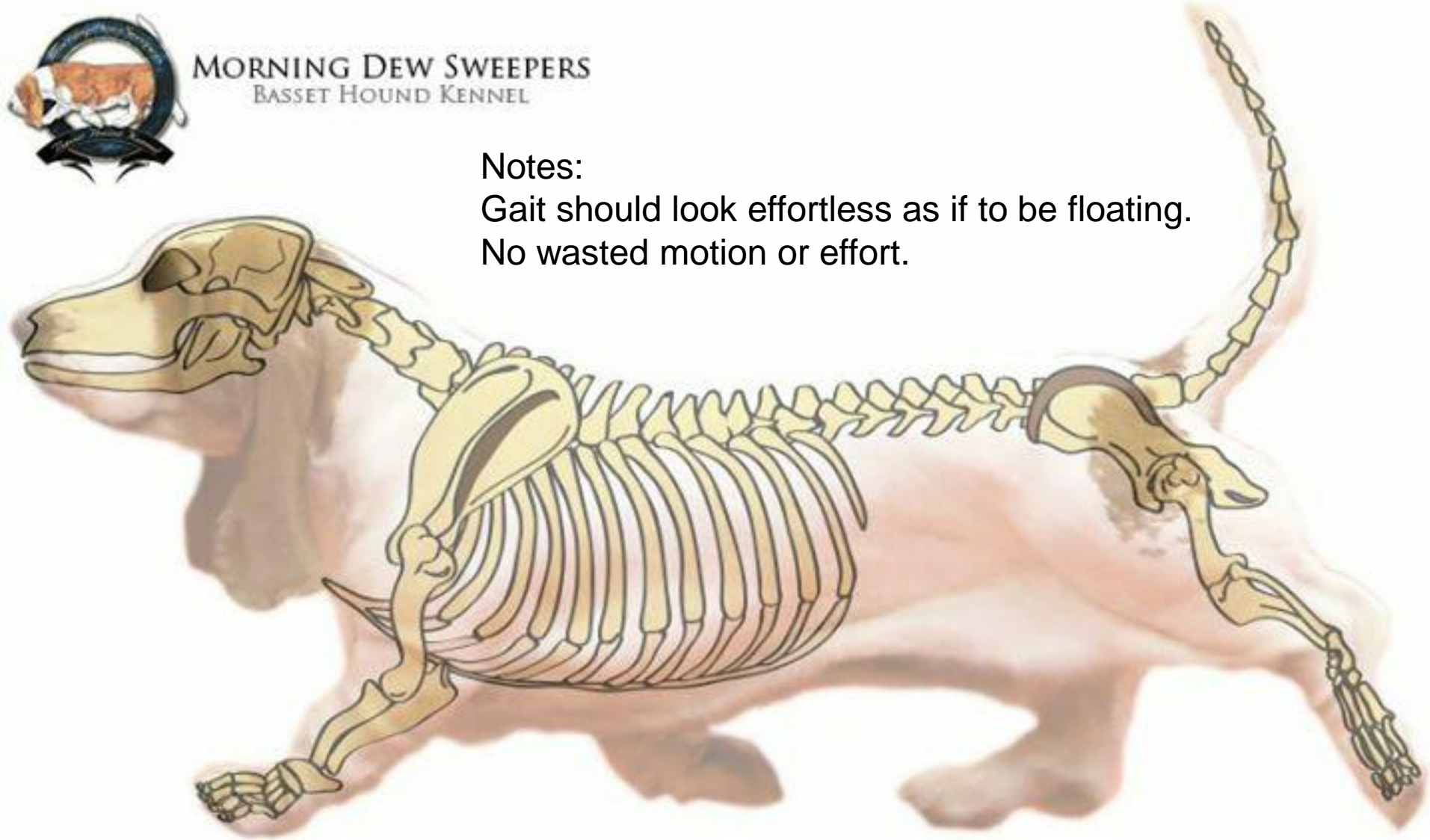


MORNING DEW SWEEPERS
BASSET HOUND KENNEL

Notes:

Gait should look effortless as if to be floating.

No wasted motion or effort.



Basset Hound movement



Notes:

Movement of NL/D/LUX/DK/UK/USA and Int (show) Ch, CW (NL)'10, W (A'dam)'10/'12, WW'11/'13, EW'11, Best Bitch Crufts '12, Bdssgr '12 CH Darwin's Dream van Grunsven. 'Natural gate', head held up naturally, not forced.

Basset Hound movement



Foot nicely put forward

Notes:

EW12 GCh. MultiCh. MultiJCh. Bassjoy Crazy Night front movement.

Basset Hound movement



Wide movement



Good movement

Basset Hound movement

My personal opinion on effortless motion:

You do not feel the dog on the lead, just the legs reaching and driving below, no bouncing, solid top line, just gliding.

Multi CH
Splash's The
Professor

Multi CH
Darwin's Dream
van Grunsven

Multi CH
Woferlow Jelly
Baby

Multi CH
Woferlow Jelly
Baby and Multi
CH Darwin's
Dream together

Notes:

Video clips of good movers

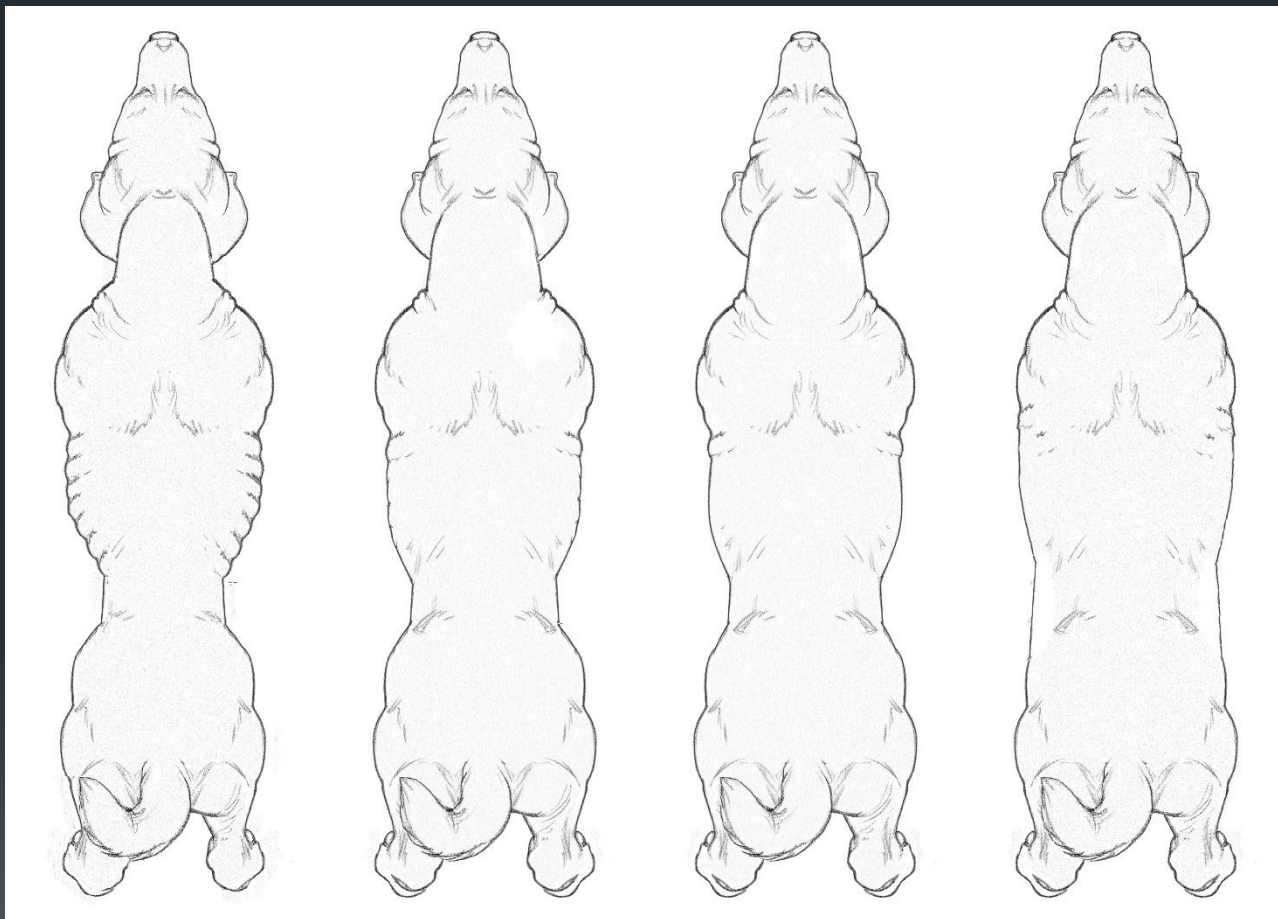
- Multi CH Splash's The Professor
- NL/D/LUX/DK/UK/USA and Int (show) Ch, CW (NL)'10, W (A'dam)'10/'12, WW'11/'13, EW'11, Best Bitch Crufts '12, Bdssgr '12 CH Darwin's Dream van Grunsven
- GB CH/DAN CH/SWED CH/INT CH, Nordic winner 2012, Club Ch Copenhagen winner 2013, top bitch DK 2012, top basset DK 2013 CH Woferlow Jelly Baby

Correct



Undesired

Correct



Underweight

Overweight

Notes:

The **temperament** is also very important, because it is just its mild character that is typical for the breed of Basset Hound.

Distrustful, shyness or even aggressively are not acceptable, and should be always penalized by the judge.

A true Basset Hound is mild, placid and open to everyone.

Extremes like apathetic or hectic and never ending barking are faults.

Height at the withers: 33 - 38 cm

Generally black, white and tan (tri-colour); lemon and white (bi-colour); but any recognized hound **colour** acceptable.

More information

Annemari Groenewald: Bassefied Basset Hounds

<http://bassefiedbassets.weebly.com/>

Facebook page: Better Basset Structure (Jane Baetz)

<https://www.facebook.com/#!/groups/1410189785921662/>

Kennel Bohemia Horrido

<http://www.bohemia-horrido.com/standardcomment.html>

Kennel Morning Dew Sweepers

<https://www.facebook.com/#!/galan.mariano?fref=nf>

<http://www.bassetmania.es>

<http://www.bassethound.es>

Kennel van Grunsven

<http://www.vgrunsven.nl/>

Additional thanks to:

Bianca Teixeira (Pan Clan Kennel from Brazil)

Jeffrey Mifsud (Bassjoy Kennel from Malt)